

UNIVERSITY OF PADOVA

*Master Thesis in Physics*

GAIA GALAXY SURVEY  
SIMULATED OBSERVATION OF GALAXIES  
WITH ESA GAIA SATELLITE

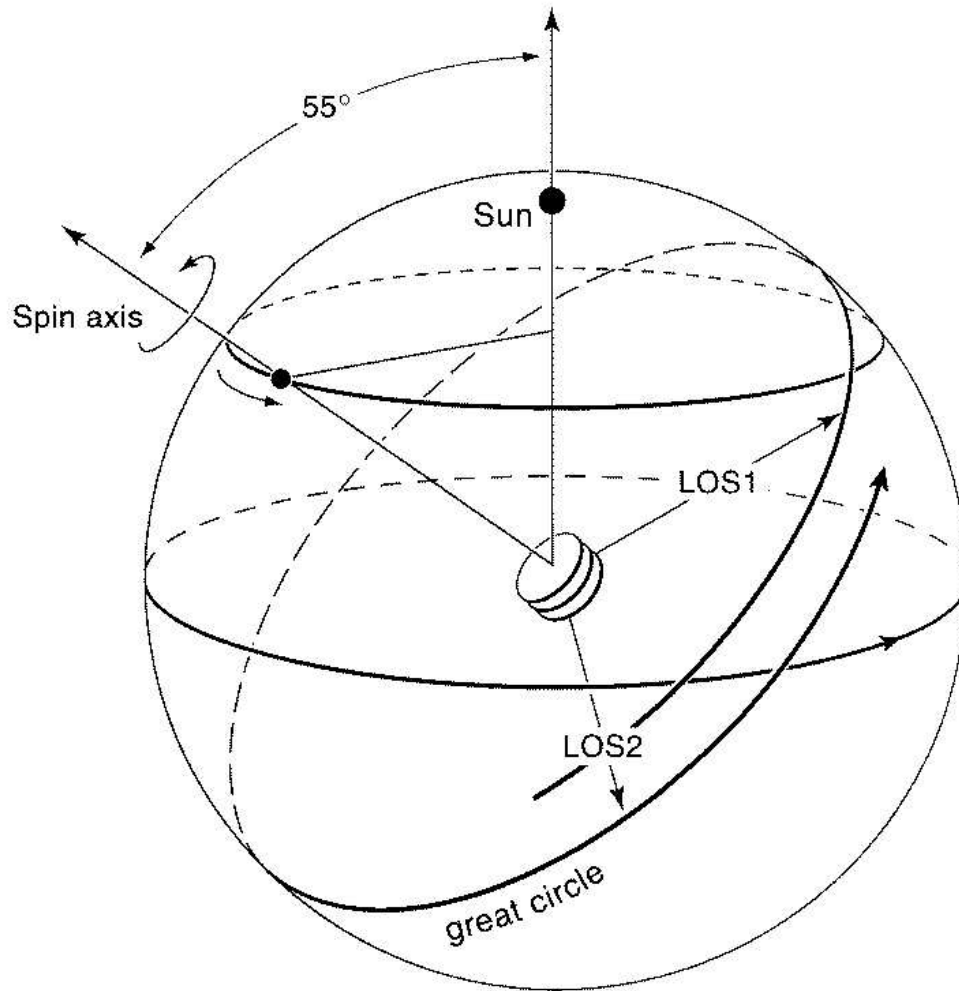
**Mattia Vaccari**

Supervisor  
Prof. A. Saggion  
Department of Physics  
University of Padova

Co-supervisor  
Prof. E. Høg  
Astronomical Observatory  
University of Copenhagen

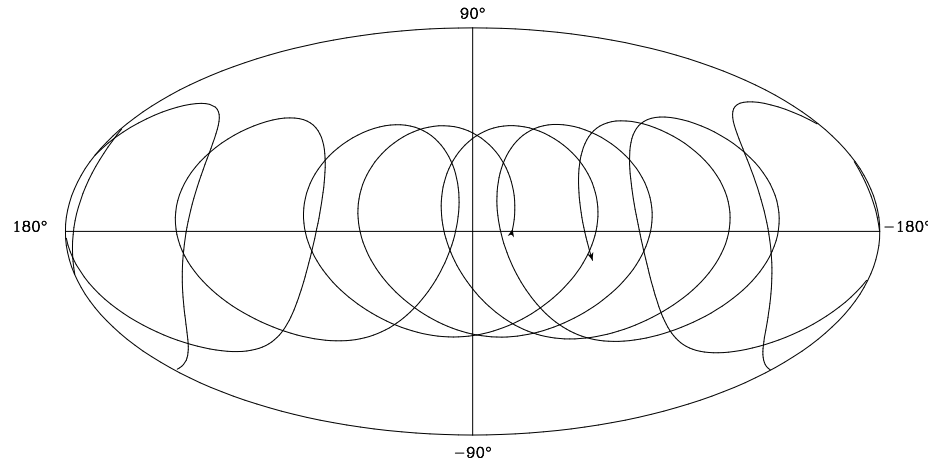
Co-supervisor  
Prof. P.L. Bernacca  
Department of Astronomy  
University of Padova

## Scanning Law (1)

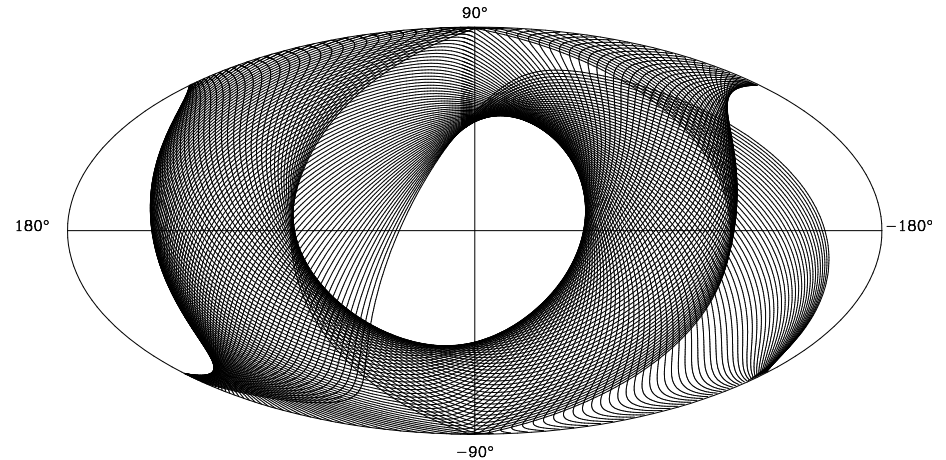


- The scanning of the sky by the satellite is obtained through the combination of two motions:
  - A spin of the satellite about its symmetry axis with  $T_{rot} = 3$  hours
  - A precession of the satellite spin axis about the Sun-Satellite direction with  $T_{pr} = 72$  days

## Scanning Law (2)



- Motion of the spin axis in 4 months



- Sky Coverage in  $T_{pr} = 72$  days

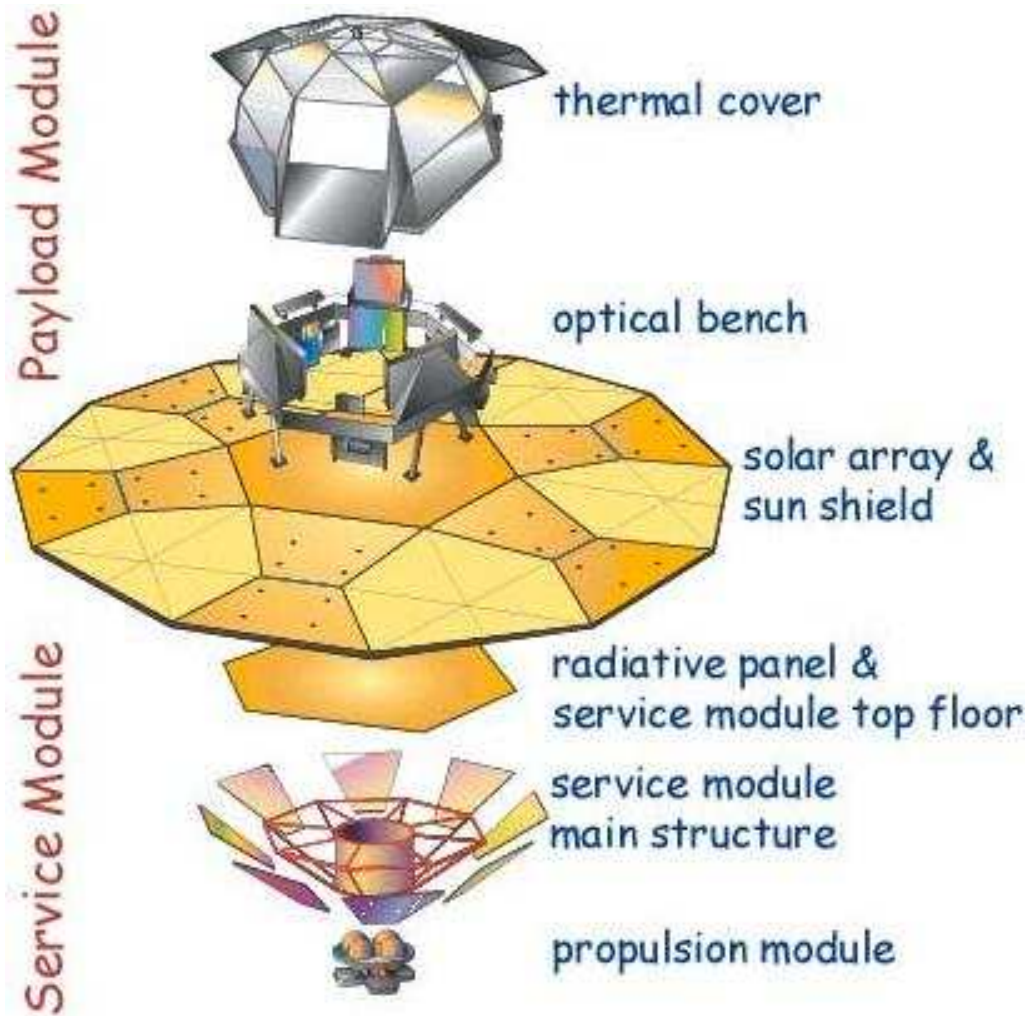


- On average every sky region is observed 85 times in 5 years



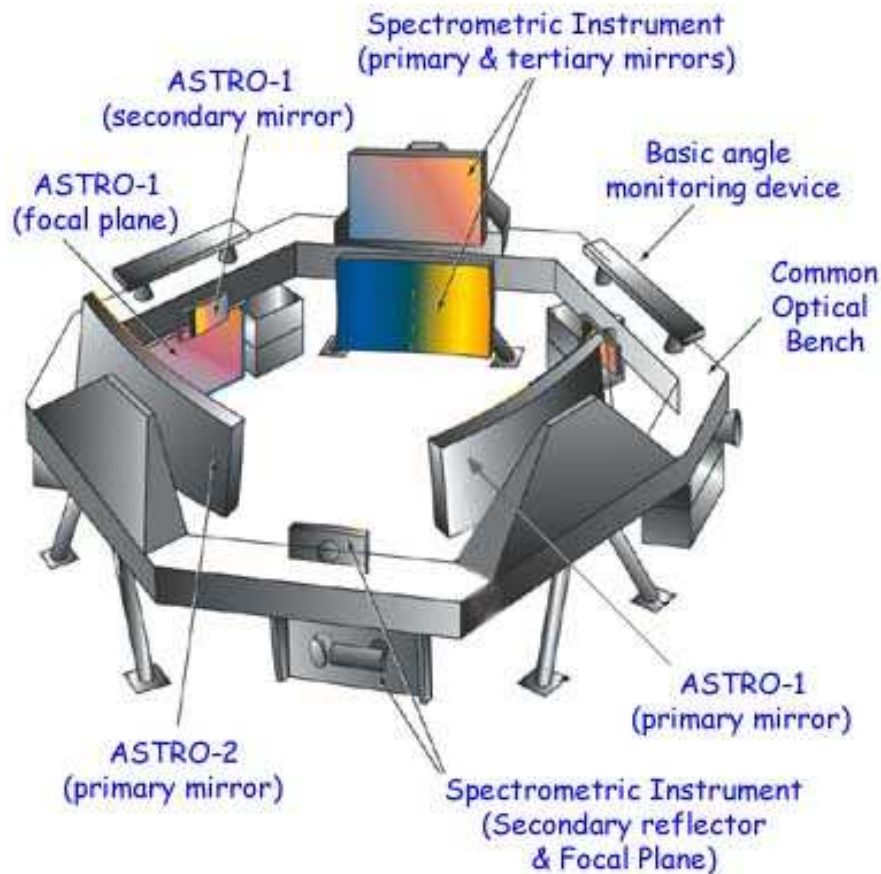
- Reconstruction of parallactic and proper motions
- Detection of possible photometric and spectroscopic variability
- Nominal accuracy achieved at the end of the mission only

# Spacecraft



- Dual launch with Ariane 5 in 2009
- Lissajous orbit at L2 point of Sun-Earth System
- Operational lifetime: 5 years
- Telemetry rate: 1 Mbit/s on average (20 Tbyte in 5 years)

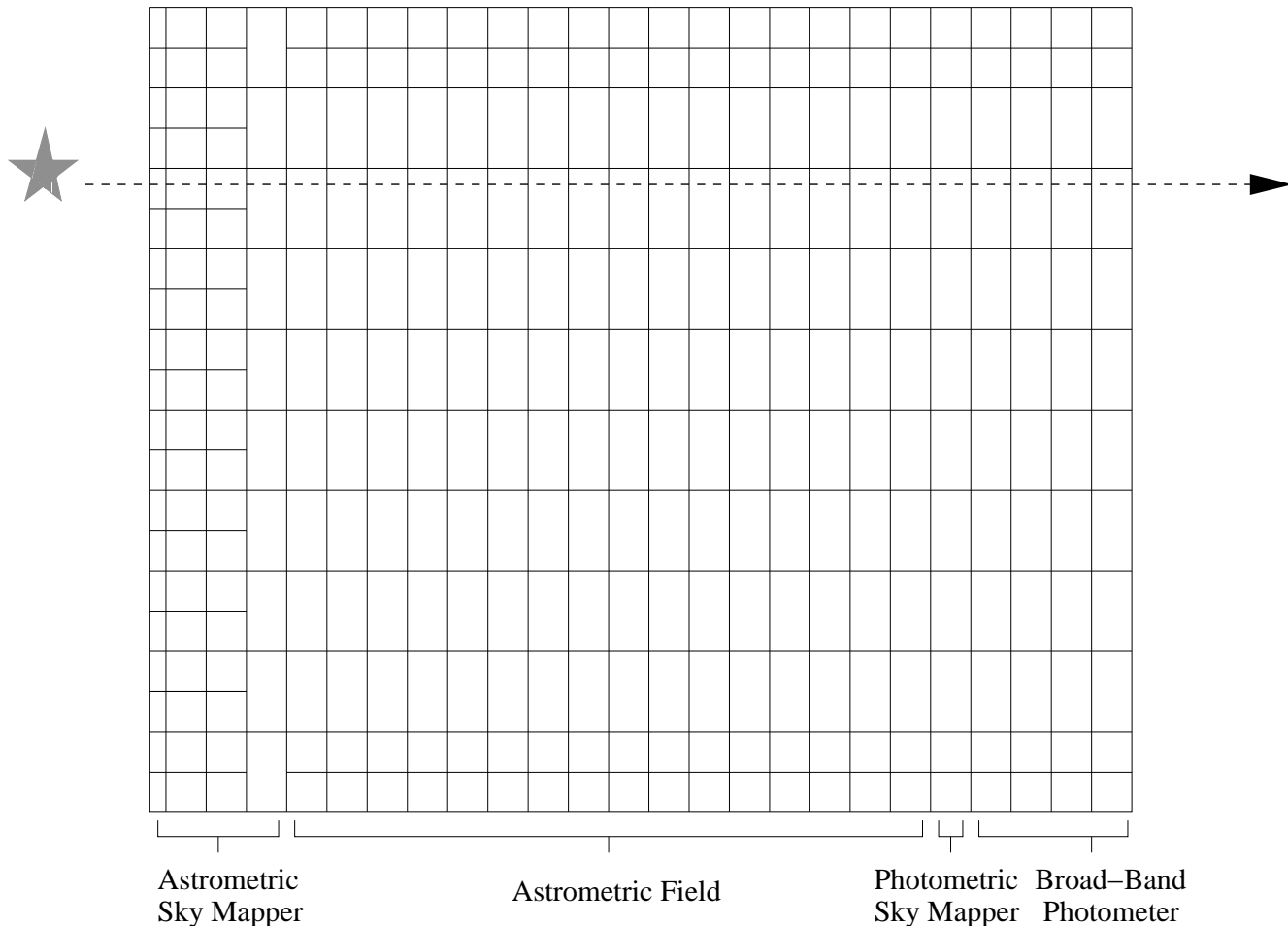
## Payload



- Three three-mirror telescopes: two astrometric instruments (Astros) and one spectrometric instrument (Spectro).
- Astros: astrometry, broad-band photometry in  $G$  and  $UBVR_I$ -like bands.  $A_p = 1.7 \times 0.7 \text{ m}^2$ . Airy Disk of  $135 \times 325 \text{ mas}^2$  at  $\lambda = 550 \text{ nm}$ .  $FOV = 0.80 \times 0.68 \text{ deg}^2$ .
- Spectro: radial velocities and medium-band photometry.  $A_p = 0.75 \times 0.70 \text{ m}^2$ .  $FOV = 2 \times 1 \text{ deg}^2$ .
- CCDs sensitive from 250 to 1050 nm ( $G$  band), with a pixel size of  $9 \times 27 \mu\text{m}^2 = 37.2 \times 111.6 \text{ mas}^2$ .

## Focal Plane of Astrometric Instruments

- A mosaic of  $\simeq 300$  CCDs, along which the objects move due to the satellite spinning motion. Charges are shifted along the CCDs at the same speed in order to increase the exposure time.



- Its structure mirrors the adopted observation philosophy, which is to maximize the scientific information per bit transmitted to ground
- ASM: object detection
- AF: astrometry and  $G$ -band photometry of detected objects
- PSM: all-sky  $G$ -band photometric mapping
- BBP: broad-band ( $UBVRI$ -like) photometry of detected objects

## Performance

- Astrometric, photometric and spectroscopic survey
- All-sky coverage
- A limiting magnitude of  $V \simeq 20$
- A complete sample at the limiting magnitude of  $\simeq 10^9$  objects (25 000 objects/deg<sup>2</sup>)
- High accuracy: 10  $\mu$ as, 5 mmag and 1 km/s at  $V = 15$
- High spatial resolution: down to 0.25 arcsec

## Scientific Objectives

- Galactic Astrophysics
- Distance Scale
- Solar System
- Local Group
- Galaxies
- Stellar Astrophysics
- Fundamental Physics
- Extra-Solar Planets
- Supernovae
- Quasars

## Objectives of the Thesis

- GAIA can “naturally” obtain an astrometric and photometric galaxy survey



- Discrimination of point-like objects and diffuse objects
- Determination of an appropriate CCD binning
- Development of a technique for the combination of different observations
- Estimation of the performance
- Discussion of scientific results



## Statistical Model of Galaxies

- The model combines observational data with empirical laws describing typical galaxy surface brightness radial profiles. The independent variables are the morphological type (E or D) and the total magnitude in the  $I$  band, the outputs are:

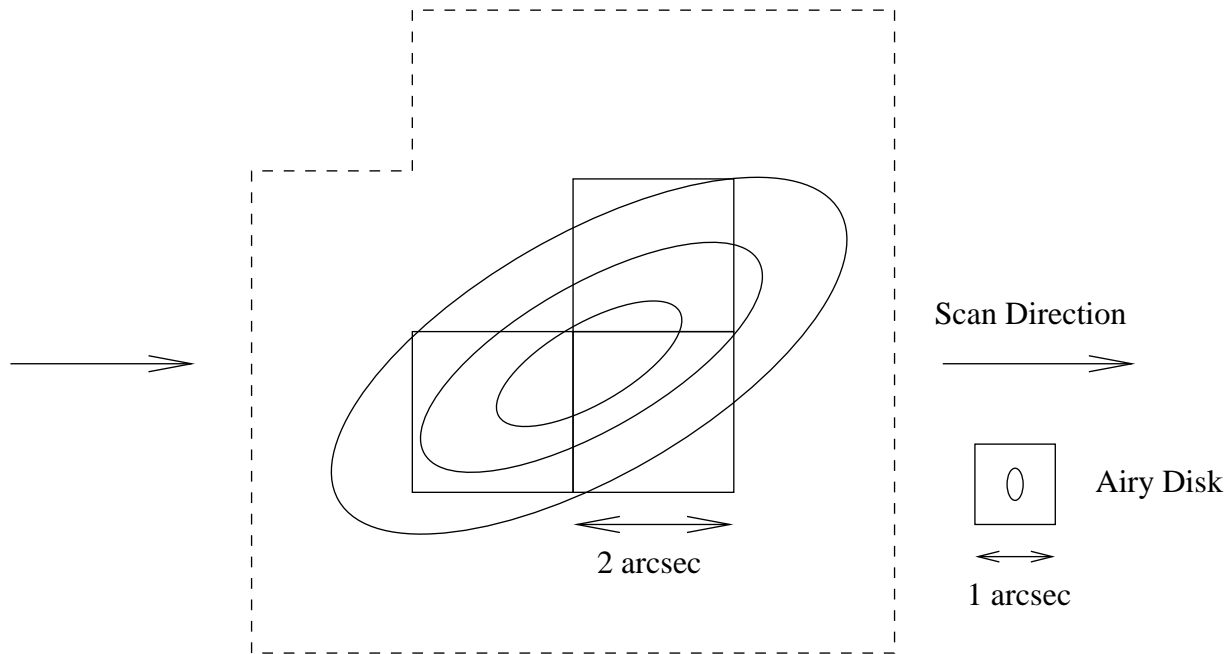
- Differential counts:  $N = N(I)$
- Cumulative counts:  $N_c = N_c(I)$
- Effective radius:  $r_e = r_e(I)$
- Effective surface brightness for E and D:  $\Sigma_{E,e} = \Sigma_{E,e}(I)$  e  $\Sigma_{D,e} = \Sigma_{D,e}(I)$
- Surface brightness radial profile for E and D:

$$\Sigma_E(r) = \Sigma_{E,e} \exp \left( -7.6692 \left[ \left( \frac{r}{r_e} \right)^{1/4} - 1 \right] \right)$$

$$\Sigma_D(r) = 0.76931 \Sigma_{D,e} \exp \left( -7.6692 \left[ \left( \frac{1.6617 r}{r_e} \right)^{1/4} - 1 \right] \right) + 2.9343 \Sigma_{D,e} \exp \left( -\frac{1.3945 r}{r_e} \right)$$

- Model's validity: within 0.2 mag/arcsec<sup>2</sup> up to  $\simeq 4 r_e$

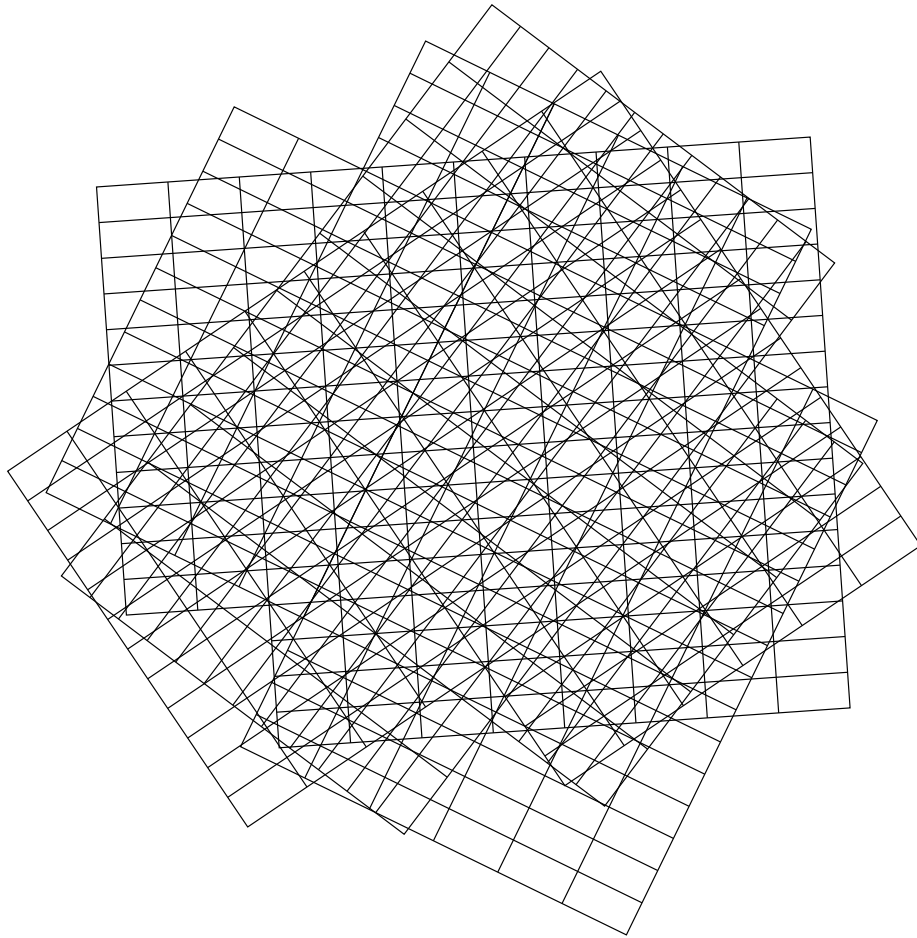
# Galaxy Detection



- Galaxies are detected in the ASM as an average surface brightness significantly in excess ( $S/N > 4$ ) with respect to the local sky background within an area of  $2 \times 2$  arcsec<sup>2</sup>.
- Whenever a galaxy is detected, the corresponding sky region and its surroundings are observed in the BBP.

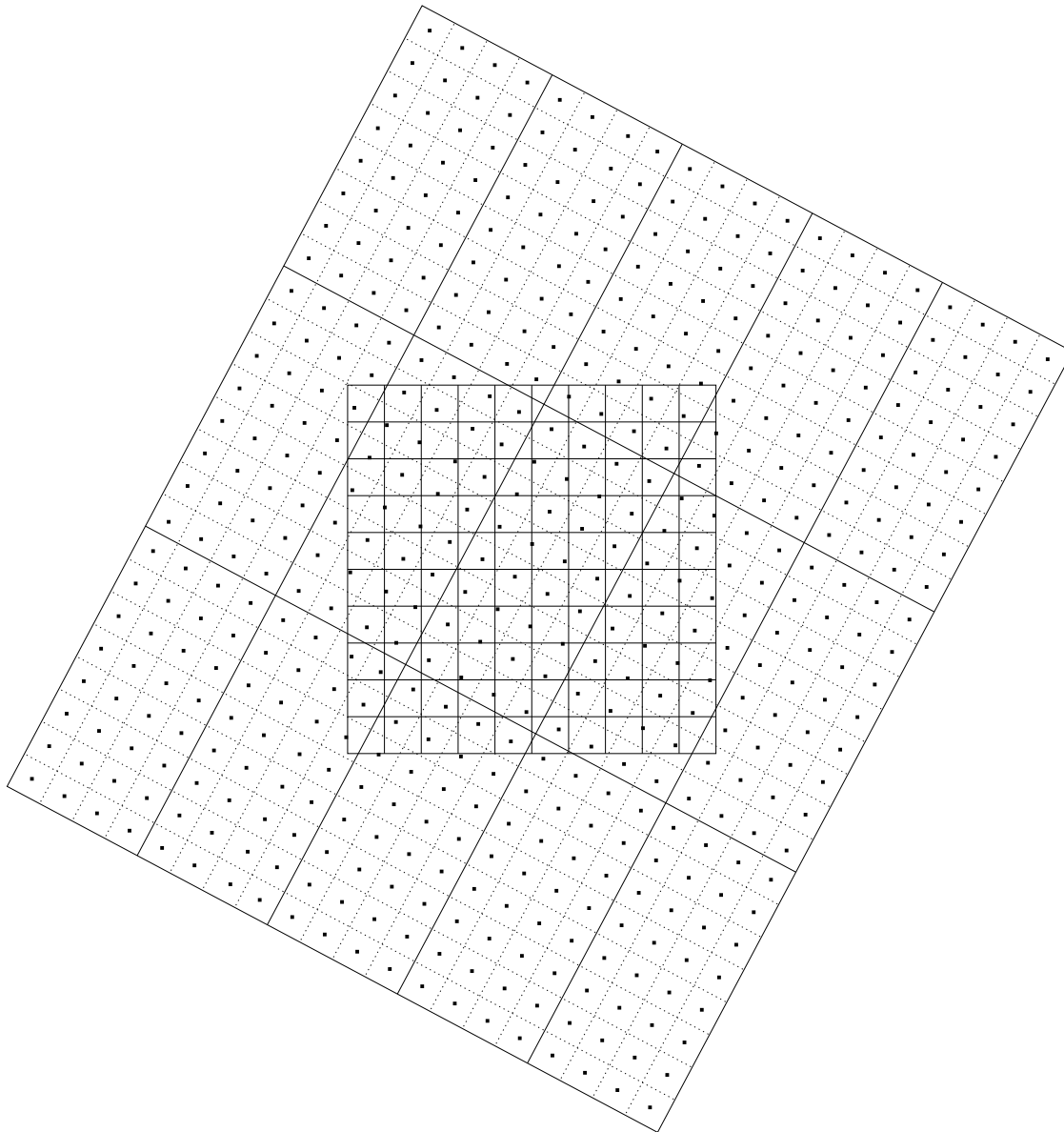
- A galaxy of  $I = 17$  would be detected 60% of the times
- $I \leq 17$  and  $|b| > 15 \Rightarrow$  at least 3 million galaxies

## Galaxy Observation



- The adopted binning determines the level of undersampling, the angular resolution, the accuracy in surface photometry and the required telemetry rate for galaxy observation
- Different observations of the same galaxy are centered and oriented differently

## Subpixeling and Rebinning



- The pixels of the image are first divided into a certain number of square subpixels, each containing an equal fraction of the counts of the original pixel
- The counts associated with each subpixel are then assigned to the pixel of the final image containing the subpixel's center
- This procedure preserves the total flux but does not recover the optical resolution which is lost due to undersampling
- The techniques developed to recover the optical resolution from undersampled HST WFPC2 images are not applicable

# Simulation and Superposition of Observations

Simulation

Superposition

HST WFPC2 Image



- Conversion of counts
- Subpixeling
- Rototranslation
- Rebinning
- Convolution with GAIA PSF
- Addition of Poisson noise and RON



GAIA BBP Simulated Observation

GAIA BBP Simulated Observation



- Subpixeling
- Counter-rototranslation
- Rebinning

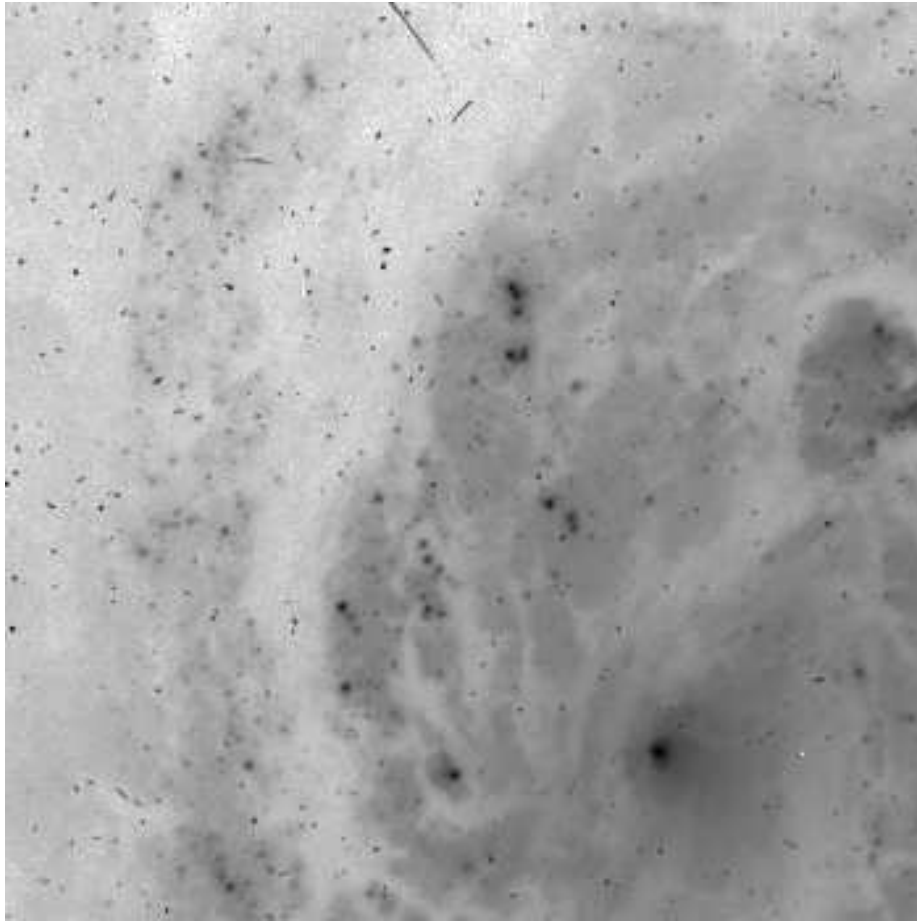


Simulated GAIA BBP Flux Map

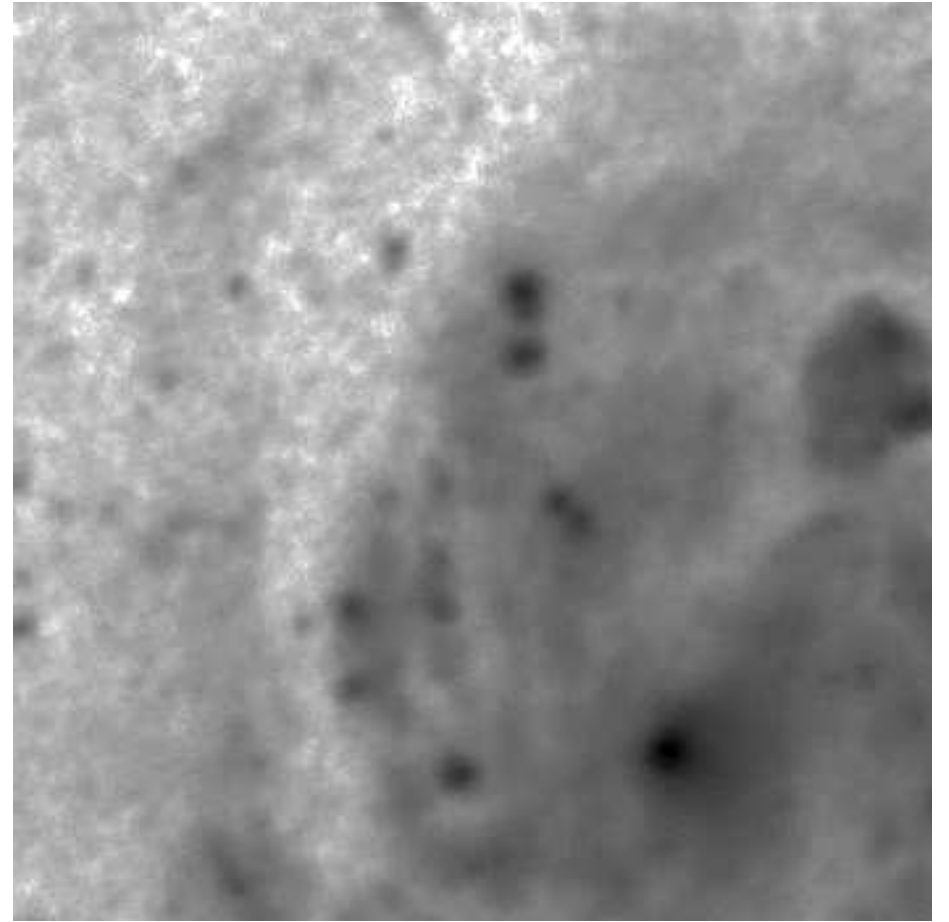


Optimal binning of  $6 \times 4$  pixel =  $223.2 \times 446.4$  mas<sup>2</sup>

## Flux Maps: M100



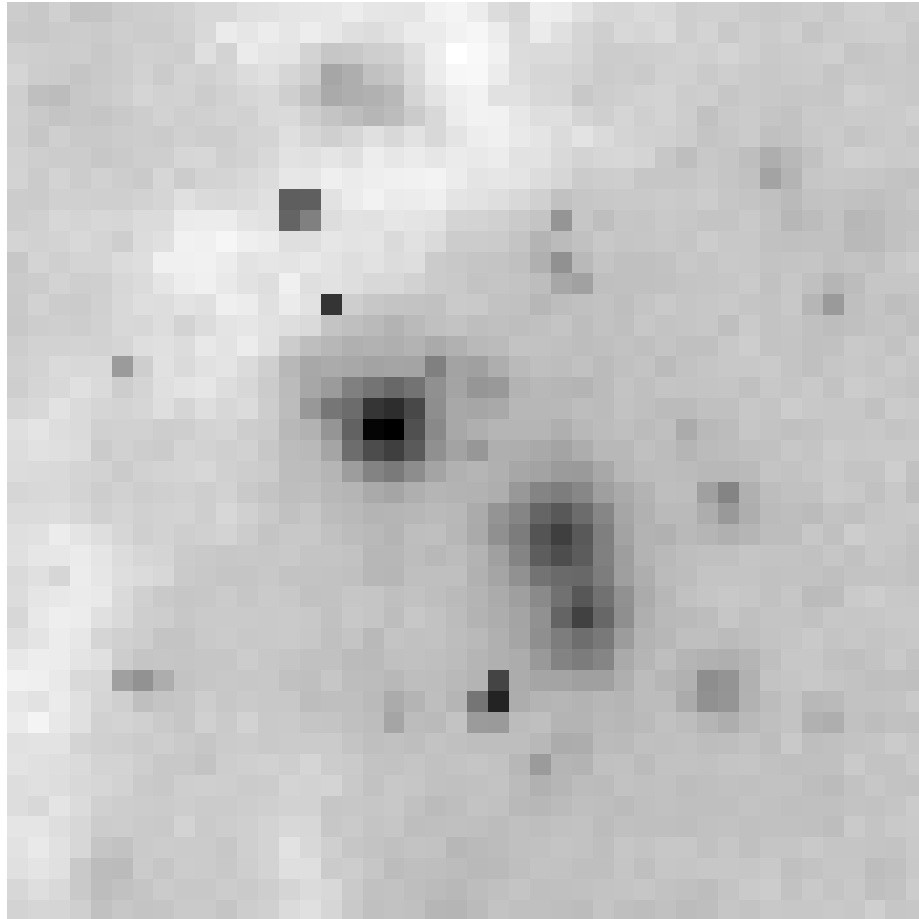
Original Image (HST WFPC2, 900 s)



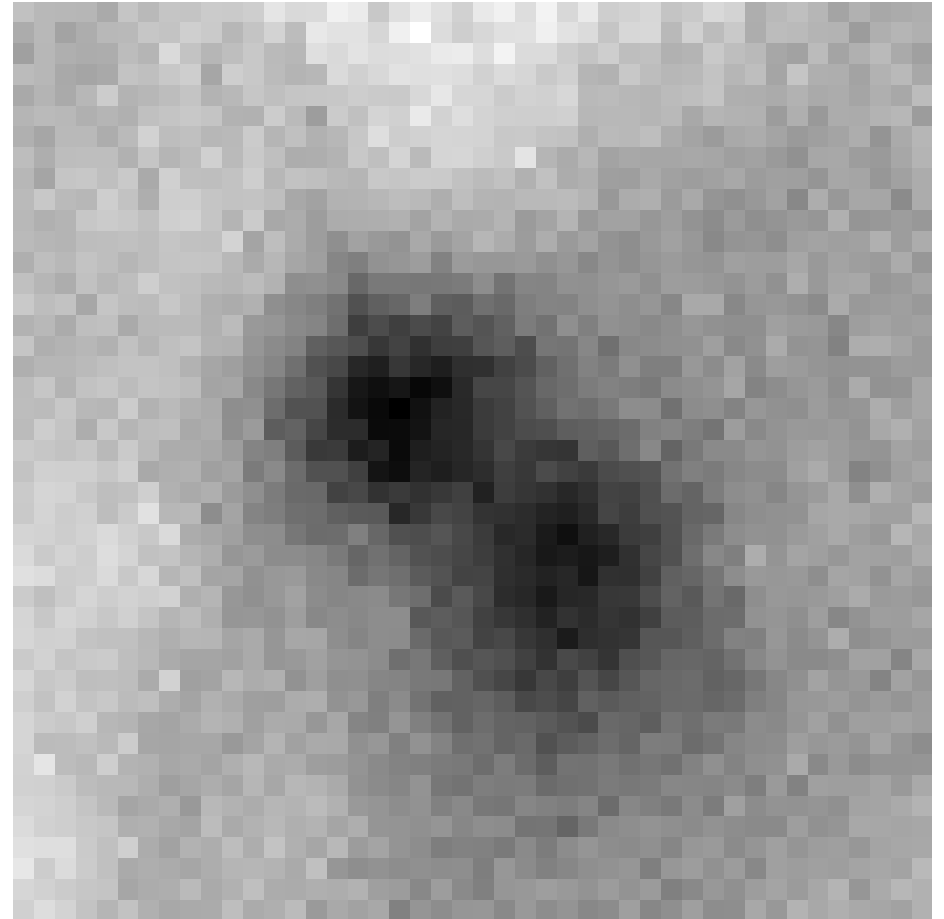
Simulated Flux Map (GAIA BBP, 43.09 s)

- The accuracy in surface photometry is of  $0.15 \text{ mag/arcsec}^2$  at  $\mu_V = 19.5 \text{ mag/arcsec}^2$

## Angular Resolution of Flux Maps: a detail of M100



Original Image (HST WFPC2, 900 s)



Simulated Flux Map (GAIA BBP, 43.09 s)

- The angular resolution is better than 0.4 arcsec

## Conclusions: Performance

- An astrometric and photometric galaxy survey
- A limiting magnitude of  $I \simeq 17$ , corresponding to  $z \simeq 0.1$  or  $d \simeq 400$  Mpc
- A coverage of at least 75% of the sky down to low Galactic latitudes
- A sample of at least 3 million galaxies
- Multi-color observations (4-5  $UBVRI$ -like bands)
- Multi-epoch observations (on average 85 observations in 5 years)
- An angular resolution better than 0.4 arcsec
- An accuracy in surface photometry of  $0.15 \text{ mag/arcsec}^2$  at  $\mu_V = 19.5 \text{ mag/arcsec}^2$ .



## Conclusions: Scientific Results

- Spatial Distribution
  - Large-scale structure in the Local Universe
  - Peculiar motions in the Local Group
  - Detection of astrometric “jitter” in galactic nuclei
- Surface Photometry
  - Bright galaxies: detailed analysis of morphology
  - Faint galaxies: statistical analysis of photometric structure in the inner regions
  - Mapping of star-forming regions and dust lanes
  - Detection of photometric variability in galactic nuclei